



# Life Whisperer

A CLEARER PICTURE OF EMBRYO SELECTION

# Select viable and euploid embryos with confidence

Life Whisperer is an objective, non-invasive web application to aid in the decision-making process of embryo selection that uses AI-based algorithms to assess Day 5 embryo morphological features correlating with the likelihood of clinical pregnancy and embryos being euploid.



## Objective

**Increased consistency, accuracy & confidence**

Receive confidence scores of 0 to 10 correlating with the likelihood of clinical pregnancy and embryos being euploid

## Easy-to-Use

**Drag-and-drop functionality helps you make key decisions**

Quickly integrate the AI-based assessment into your embryo selection workflow

## Cost-Effective

**No expensive equipment, maintenance, or subscription fees**

No capital outlay is required with minimal to no disruption to the IVF workflow

## Patient Friendly

**Give patients a first-hand look at the decision-making process**

Included Patient Reports increases transparency, patient knowledge and opens discussion during the IVF process

## A versatile tool for more informed decisions

Comprised of two separate components, Life Whisperer Viability and Life Whisperer Genetics help maximize success and help patients build families.

May reduce time to pregnancy by up to 12%<sup>1</sup>

### Life Whisperer Viability

Assists in the selection of blastocysts that have a greater likelihood of pregnancy. In a simulated cohort analysis, Life Whisperer Viability improved selection of viable embryos which led to a 12% reduction in the number of cycles needed to achieve clinical pregnancy compared to Gardner grading methods.<sup>1</sup>

**Figure 1. Life Whisperer Viability Time to Pregnancy vs Gardner Grading in a Simulated Cohort Study**

	Life Whisperer Viability	Gardner Grading (3BB Threshold)
Average Time to Pregnancy (in number of cycles):	1.65	1.88
Reduction in Time to Pregnancy:	12.2%	

### Life Whisperer Genetics

Assists in the selection of embryos that have a greater likelihood of being euploid prior to further testing or transfer, offering a non-invasive glimpse of embryo genetic integrity. In a simulated cohort study, Life Whisperer Genetics identified the top-ranked embryo as euploid in 82.4% of cohorts.<sup>2</sup>

**Figure 2. Life Whisperer Genetics Performance in a Simulated Cohort Study**

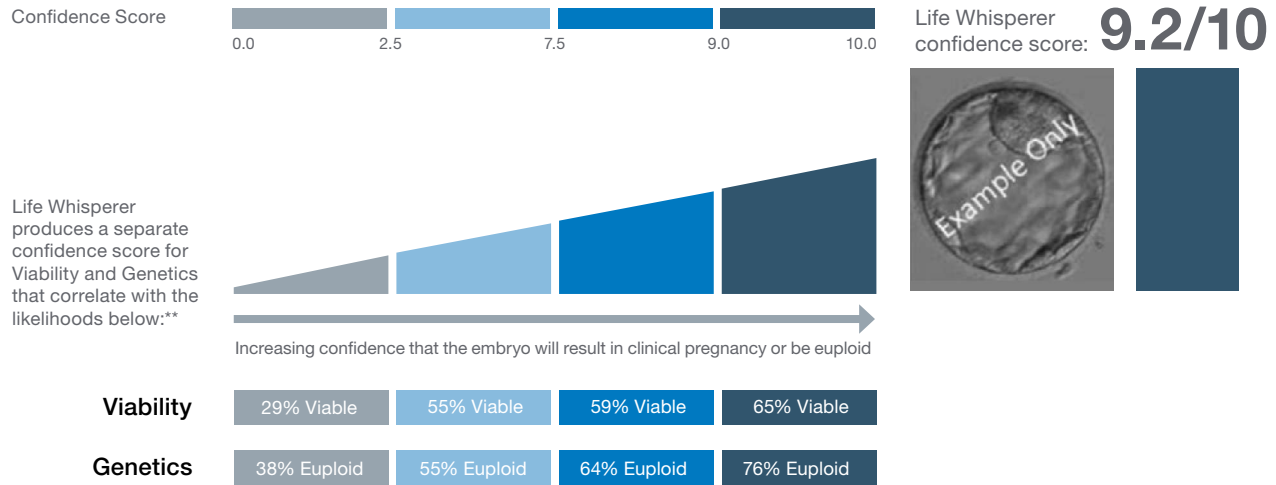
	Life Whisperer Genetics	Random
Selection Probability* :	82.4%	65.2%
Probability Improvement:	26.4%	

\* Proportion of cohorts with top ranked embryo as euploid

# Objective Assessment of Embryo Viability and Genetic Integrity

Life Whisperer produces two confidence scores from 0 to 10, one indicating how confident the AI-based algorithm is in the likelihood that an embryo will lead to pregnancy and the other indicating the confidence that the embryo is euploid.\*\*

**Figure 3. What Does Your Report Tell You About Your Embryo Status**



## Supports Patient Engagement

Included Patient Reports from Life Whisperer Viability and Life Whisperer Genetics provide a tangible account of the embryo evaluation and selection process for patients to take home, increasing transparency and participation.

IVF labs across the globe are constantly challenged to best identify embryos which will successfully develop into healthy children. Used as a non-invasive adjunct tool to help select embryos with the highest potential for success, the Life Whisperer AI-based technology will certainly assist in this critical selection process.

*Matthew VerMilyea PhD, HCLD/CC (ABB),  
Vice President of Scientific Advancement – Ovation Fertility;  
Scientific Director – Texas Fertility Centers; Laboratory and  
Operations Director – Ovation Fertility Austin & San Antonio*



\*\* The Life Whisperer Viability confidence score represents the likelihood that the embryo may or may not result in a successful clinical pregnancy. It does not represent the probability of a live birth. The performance of Life Whisperer Viability does not take into account any patient-specific factors that may influence clinical outcome. The Life Whisperer Genetics confidence score reflects the confidence that the embryo may or may not be euploid in vitro on Day 5 of development. It does not represent the likelihood of euploidy in utero nor at birth. Life Whisperer Genetics is not a substitute for prenatal testing. Prenatal testing is advised to confirm the genetic status of the fetus should a pregnancy occur.

# Easy-to-use and affordable technology

The Life Whisperer software is intuitive and easy to use— simply drag and drop an image into the application for analysis and receive confidence scores in less than one minute.

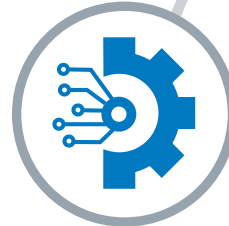
As a cloud-based web platform, Life Whisperer enables you to bring AI-based technology to the bench without complicated equipment or additional costs. A standard optical light microscope, camera, and internet access are all you need to bring Life Whisperer into your embryo assessment workflow.

Ask us how Life Whisperer can help you improve embryo selection. Contact your FUJIFILM Irvine Scientific representative today at [lifewhisperer@fujifilm.com](mailto:lifewhisperer@fujifilm.com) to learn more.

Developed using embryo images with known clinical outcomes determined through fetal heartbeat detection or PGT-A results.



Built on over 20,000 images for the Viability component and 15,000 images for Genetics.



Diverse data sourced globally from multiple leading IVF clinics ensures unbiased, accurate embryo assessment.



Regional cloud servers compliant with privacy regulations and high encryption standards helps safeguard data.



## Life Happens in a Moment

Life Whisperer is a software application for assessment of embryo images, intended to be used for clinical decision support to aid in the selection of embryos during in vitro fertilization (IVF) procedures. Not intended to be used as direct diagnostics. Any treatment decisions should be made in combination with other methods of embryo evaluation, and the user's own expert opinion, according to institutional procedure.

Life Whisperer Genetics is not to be used as a substitute for standard embryo evaluation methods. Additional assessments such as conventional morphological evaluation should be conducted, and Life Whisperer Genetics used solely to provide additional information on the likelihood of embryo euploidy. Life Whisperer Genetics is not to be used as direct diagnostics - confirmatory PGT-A or other genetic testing methods should be conducted as warranted. The healthcare professional should make the final informed assessment regarding additional testing, transfer, cryopreservation, or any other decision with respect to the embryo or patient.

#### References:

1. Diakiw SM, Hall JMM, VerMilyea M, et al. An artificial intelligence model correlated with morphological and genetic features of blastocyst quality improves ranking of viable embryos. *RBMO*. 2022;45(6): 1105-1117
2. Diakiw SM, Hall JMM, VerMilyea MD, et al. Development of an artificial intelligence model for predicting the likelihood of human embryo euploidy based on blastocyst images from multiple imaging systems during IVF. *Hum Reprod*. 2022;37(8):1746-1759. doi:10.1093/humrep/deac131

[www.irvinesci.com](http://www.irvinesci.com)

**FUJIFILM**  
Value from Innovation

Available from FUJIFILM Irvine Scientific, sole worldwide distributor, in select regions. Life Whisperer is not authorized for sale in the US.

FUJIFILM Irvine Scientific and its logo are registered trademarks of FUJIFILM Irvine Scientific, Inc. in various jurisdictions. All other trademarks are the property of their respective owners.

©2023 FUJIFILM Irvine Scientific P/N 017315 Rev.00

 IrvineScientific

#### FUJIFILM Irvine Scientific – Corporate

1830 E Warner Avenue, Santa Ana, CA 92705 USA

Phone: 1 (949) 261-7800

Toll Free: 1 (800) 437-5706

Fax: 1 (949) 261-6522

Support: [fisitmrequest@fujifilm.com](mailto:fisitmrequest@fujifilm.com)